

HiLING

Program

of the
ATI-Region IVA



HiLING request, petition, clamor



High impact

Location specific

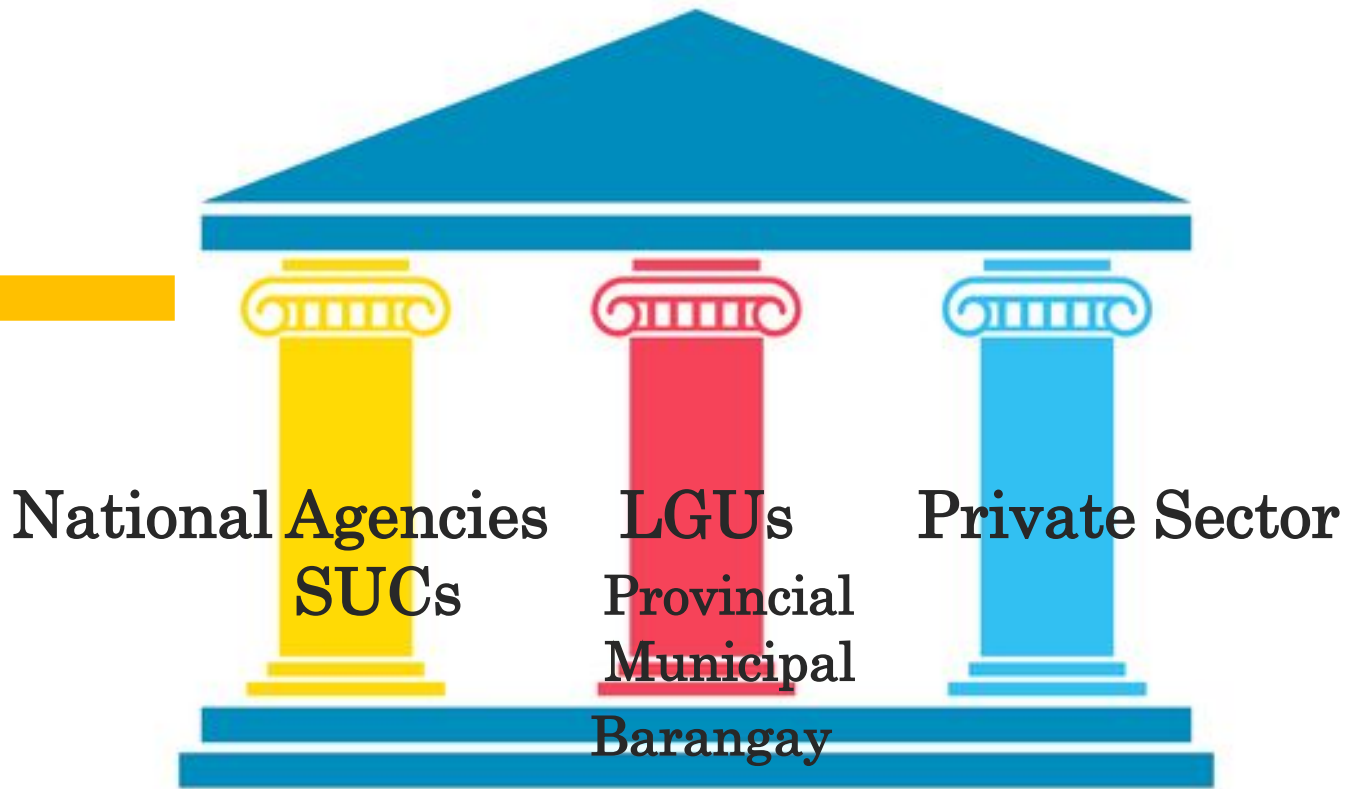
Institution centered

Need based

Goal directed

High impact

Hi
L
I
N
G



Common and holistic view of development

Location specific



Hi
L
I
N
G

Terra Verde Econature
Farm/ESP

2018, Maragondon, Cavite
4th class municipality

2017, Baras, Rizal
4th class municipality

Flor's Garden/ESP

Tsu Mark Nature Farm/SPA

2016, Mabitac, Laguna
5th class municipality

Terra Verde Econature Farm

PhilRice, Palayamanan Model Farm

2019, Alitagtag, Batangas
4th class municipality

Don Leon's Farm, LSA
Luntiang Republika, LSA

2016, Macalelon, Quezon
4th class municipality

4th - 5th class municipality
With supportive PLGUs & MLGU
LSA, SPA or ESP or Farm School or model farm

Institution centered

FAMILY as the basic institution
of the society



Father
Mother
Youth
Child

Hi
L
I
N
G

Each of them has a stake in the over-all development of their family, in problem-solving, decision-making and in enjoying the benefits derived from their concerted effort.

Need-based PRRA



Hi
L
I
N
G



2016



2016



2018



2017



2019

Different location, different needs = intervention
They are engaged, thus claim ownership of the program.
Together articulated their needs and presented/validated them with the LGUs/NGAs/Private sector during the last day of the PRRA

Goal-directed

Ambisyon 2040

“Matatag, maginhawa at panatag na buhay para sa lahat”

Department of Agriculture

“ Food availability and affordability”

ATI

**Food security, poverty alleviation and social equity
for sustainable development**

**Productive, Climate-smart and empowered
families and farm communities**

**Hi
L
I
N
G**



Hi L I N G



2016

2017



2018

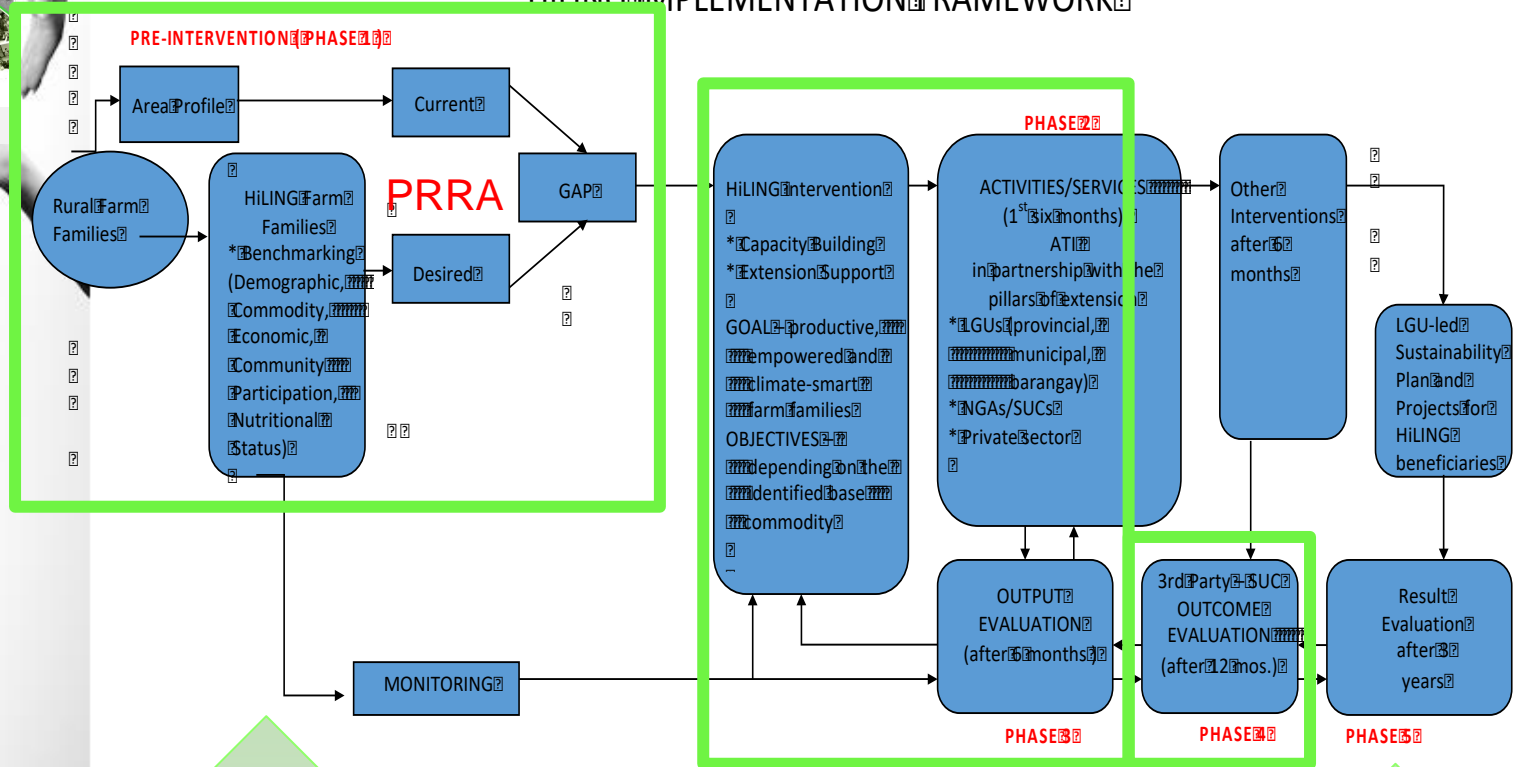
69 families
276 individuals



2019

15 families = 84 families
 $60 + 276 = 336$ individuals

HiLING IMPLEMENTATION FRAMEWORK



Conceptualization, planning and preparation phase (5 months before)

ACTUAL INTERVENTION 6 months

2020 IMPACT EVALUATION

HiLING



HiLING Program



Third Party Evaluation

1 year after (end of 2017)

Productive- *maximizing the potential of the land and getting the most profit and using their time to worthwhile activities*

Climate-smart - *readiness in times of calamities*

Empowered - *the confidence and capacity to decide on their own*

1. Identify the adoption rate of the different production technologies;
2. Distinguish the beneficiaries' increase on the level of KSA (production and social technologies) after the 6 month intervention;
3. Identify status of the existing FAs and newly formed 4H and RIC; and
4. Identify the level of productivity of the farm family.

Hi
L
I
N
G



Demographic Profile

All the 30 families were represented during the outcome evaluation. (100%)

Age (head of the family) ranges:

Above 50 = 19.35 %

45-49 yrs. old = 32.26%

40-44 yrs. old = 19.35%

35-39 yrs. old = 16.13%

30-34 = 0

25-29 yrs. old = 9.68%

20-24 yrs. old = 3.23%

Mature population

87.09%

12.91%



Male : 45.16

Female : 54.84

Women helped their husbands during land preparation, sometimes planting and selling their farm produce.

Hi
L
I
N
G



FAMILY INCOME

Monthly Income	Frequency	Percent	
3,000-5,000	14	45.16	80.64%
5001-7,000	9	29.03	
7001-10,000	2	6.45	
Above 10,000	5	16.13	16.13%
No response	1	3.23	
		100%	

poverty threshold per family per month
P10,481 in 2018 (PSA, Business Mirror, April 2019)



39.22 FAs
5.88 Cooperatives
17.65 RIC
15.69 4H
21.57 Organikong Pansakahan
(Mabitac)

Hi
L
I
N
G



OBJECTIVE 1: Adoption Rate

Using Likert Scale

4.71 Mean score (90-100% ng napag-aralan (FFS-SPF) ay naisabuhay

90% of the respondents implied that FFS-SPF gave them
POSITIVE OUTCOME as an alternative livelihood.

Hi
L
I
N
G



“Malaking bagay po yung binigay nyo po samin panghahayupan at marami po kaming natutunan. Yung mga pagtimpla timpla po ng mga pakain dati po ay hindi namin alam ganun lang pala ngayon ay natututo po kami magtimpla ng pakain sa baboy”. – **Rolly del Mundo, Macalelon**

OBJECTIVE 2: Beneficiaries' increase on the level of KSA

4.57 Weighted Mean (Increase in knowledge related to building appropriate housing (4.61), “ no bath technology (4.71), disseminated knowledge to other co-farmers (4.39)



“Dun na nga po sa pag aalaga ng baboy dati po ay ang aming pagkain ay kung ano ano na lamang at tsaka kung minsan ay malaki ang nagagastos namin sa sa pagbili minsan ng feeds, yung dumating po yung hiling natututo kaming magtimplaq ng organic kumbaga po ay bumaba yung gastos namin dahil po sa mga gulay na sinasama dun simula nun kaming pamilya ay lagi ng nagppulong kung ano ang kung anong maganda tsaka po ay nung dumating din po yung hiling ay marami po kaming training na aattendnan isa na po yung sa pagpoproseso ng pagkain”. **Geraldine Recilla, RIC, Macalelon**



“Mag buhat po ng dumating ang HILING Program ay malaki po ang naitulong dahil po hindi laang po ako ang nakinabang at marami po kami at natututo po kaming mag pakain ng baboy ng maitipid, hindi laang po ako pati narin po ang aking pamilya ay natututo narin pong magtimpla, magpakain at nakapag-training din po kami sa disaster yan po ang mga natutunan namin”. – **Richard Balane, President of Olong Tao Farmers' Organization, HiLING beneficiary**



OBJECTIVE 2: Beneficiaries' increase on the level of KSA

4.23 Weighted Mean (Planting Cash Crops 4.32, Record-keeping 4.26, Marketing 4.00, Farm Plan and Budgeting 4.34

"Dati po ako'y di naglilista nung mga budget po nung kung ano yung nabenta, tapos po yung tinanim po kung anong gastos at benta yung paglilista po hindi po ako dati naglilista, kung kumita po kami, kahit o ako ay taon taon nagtatanim hindi po kami naglilista. Natuto po ako dito nung kung pano maglista. Tsaka, edi nagdagdag puhunan po tapos natuto po ako dun sa pagluluto. Tapos, malaking tulong po yung binigay na pagsasanay gawa ng pandagdag puhunan po samin yung binigay pong biniling baboy ay nabenta po namin ngayon ay may bago nakakulong na anim na biik "- **Rosario Balane, RIC, Macalelon**



"Sa aking 4h po dati po ay mahiyain, indi mo po un mapaasama po sa mga kabataan na mga naggagala laging lang pong nasa bahay un. Tapos ngayon po pag may patawag sa seminar ay sya na mismo ang nagpapaaalam na gusto nyang sumama". - **Celiza Planillo, Mabitac**






Hi L I N G

OBJECTIVE 3: Status of FAs, 4H
and RIC;

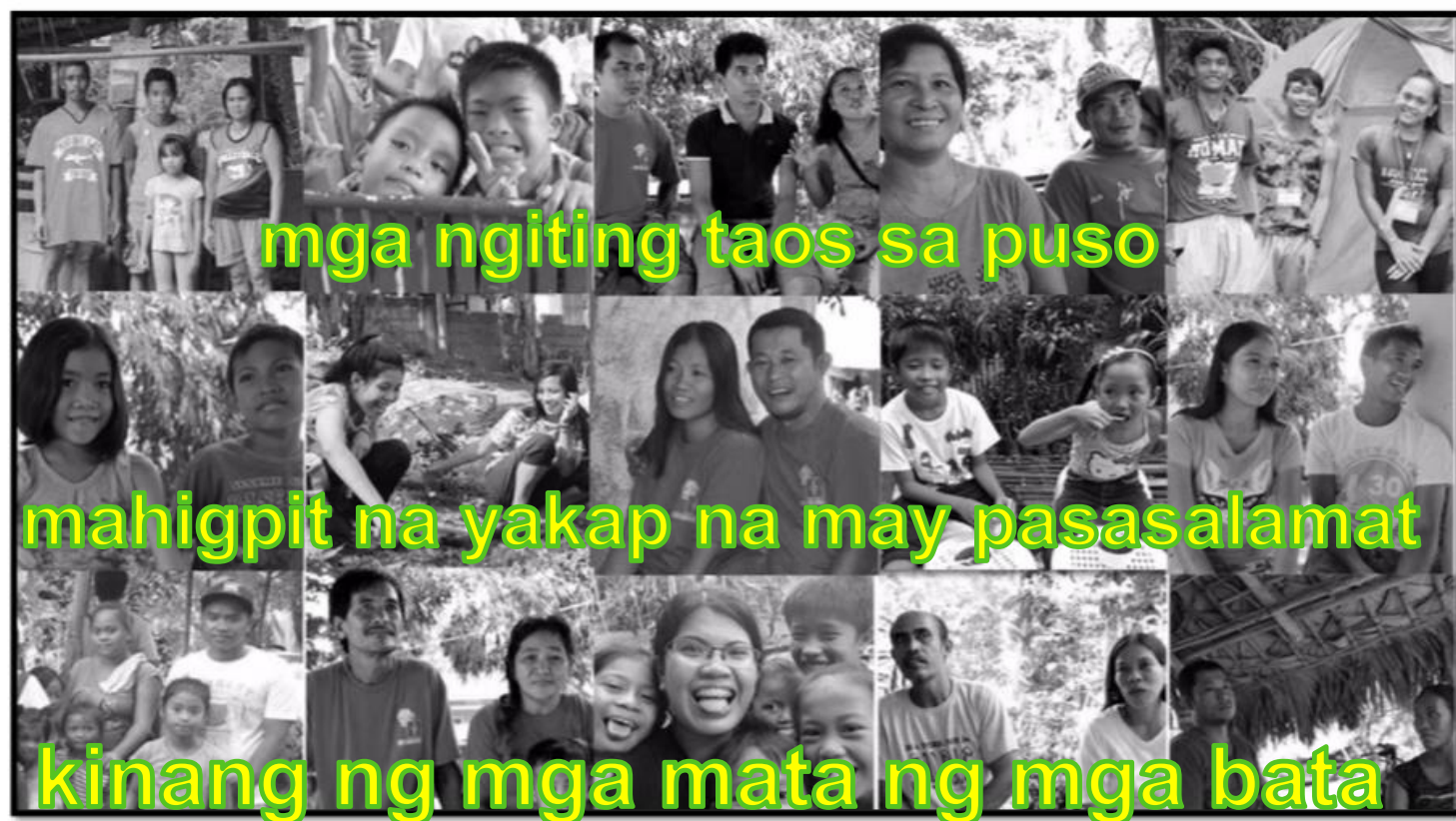
OBJECTIVE 4. Level of productivity

4.58 Weighted Mean (Provision of farm implements and inputs 4.55, Technical assistance in FFS, FBS, Leadership Training and etc. 4.68, Assistance in education, medical and supplemental feeding 4.50)

HOLISTIC – 4.56 Weighted Mean (Having alternative livelihood 4.48, Developing self-confidence 4.81, Increase participation in community activities 4.65, Increase weight through feeding program 4.32)



“Nung hindi pa po kami nakakaattend ng training ay lagi po kaming nag aaway na mag-asawa. Kaya po yung pag t’ttraining po malaking bagay po yun. Dati nagpapataasan kami ng pride, parehas kasing balo.– **Rolly Del Mundo, Macalelon**



Is 6 months enough to create IMPACT?
Are we able to make a mark in their lives ?
Our consolation and source of inspiration to continue...

THANK for giving us the **CHANCE** to serve them through the
HiLING program and **THANK YOU** to our partners.